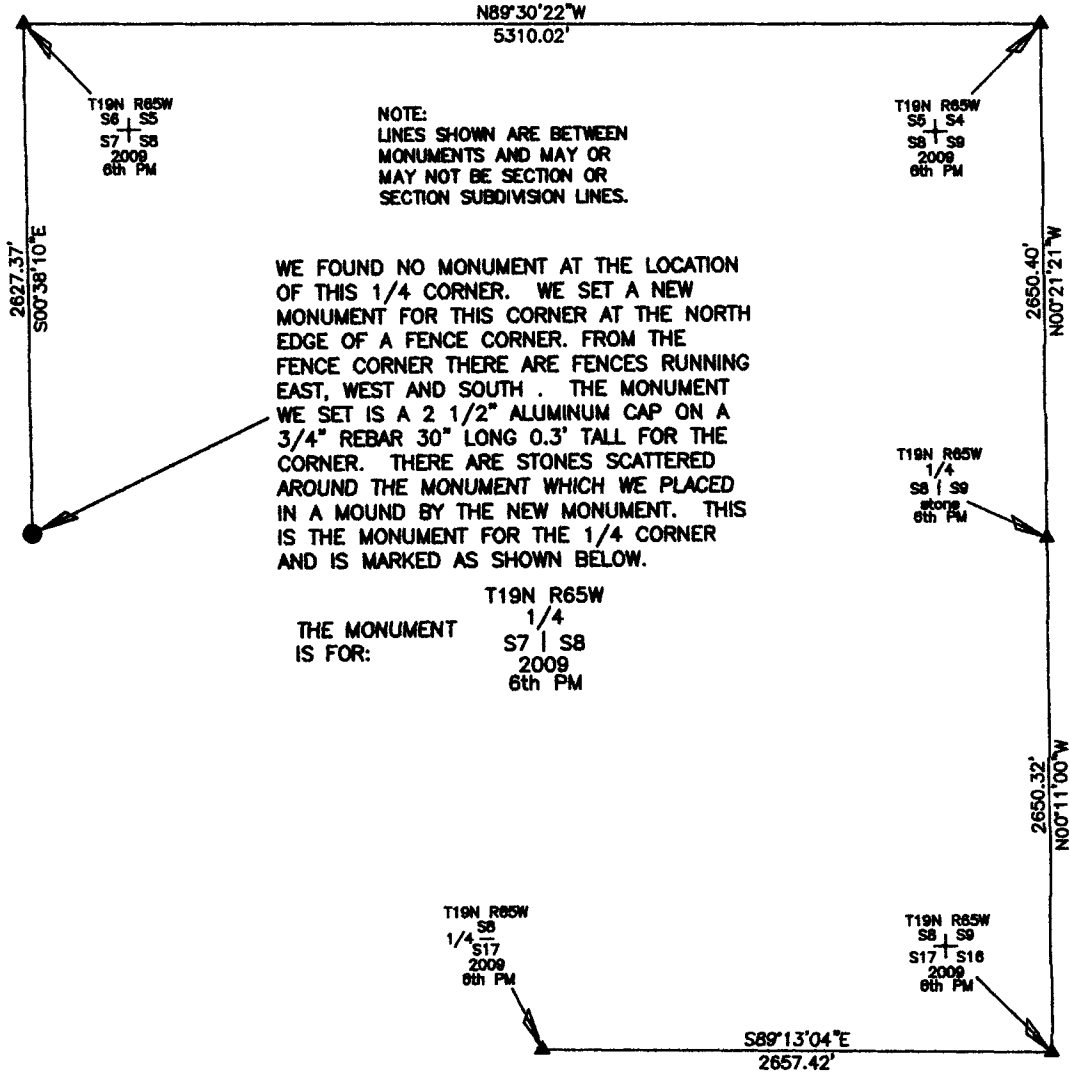


# State of Wyoming Corner Record

(In compliance with the *CORNER PERPETUATION AND FILING ACT*, Wyoming Statutes, 1977, Section 36-11-101, et. seq., and the Rules and Regulations of the Board of Registration for Professional Engineers and Land Surveyors.)

Reverse side of this form may be used if more space is needed.

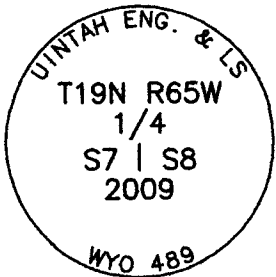
Record of original survey and citation of source of historic information (if corner is lost or obliterated). Description of corner monumentation evidence found and/or monument and accessories established to perpetuate the location of this corner. Sketch of relative location of monument, accessories, and reference points with course and distance to adjacent corner(s) (if determined in this survey). Method and rationale for reestablishment of lost or obliterated corner.



**NOTE:**  
LINES SHOWN ARE BETWEEN MONUMENTS AND MAY OR MAY NOT BE SECTION OR SECTION SUBDIVISION LINES.

WE FOUND NO MONUMENT AT THE LOCATION OF THIS 1/4 CORNER. WE SET A NEW MONUMENT FOR THIS CORNER AT THE NORTH EDGE OF A FENCE CORNER. FROM THE FENCE CORNER THERE ARE FENCES RUNNING EAST, WEST AND SOUTH. THE MONUMENT WE SET IS A 2 1/2" ALUMINUM CAP ON A 3/4" REBAR 30" LONG 0.3" TALL FOR THE CORNER. THERE ARE STONES SCATTERED AROUND THE MONUMENT WHICH WE PLACED IN A MOUND BY THE NEW MONUMENT. THIS IS THE MONUMENT FOR THE 1/4 CORNER AND IS MARKED AS SHOWN BELOW.

THE MONUMENT IS FOR:  
 T19N R65W  
 1/4  
 S7 | S8  
 2009  
 6th PM



**CORNER MONUMENT SYMBOLS**  
 ● RECORD IS FOR THIS CORNER MONUMENT.  
 ▲ A RELATED CORNER OR WC MONUMENT.

SCALE 1"=1000'  
 (EXCEPT IN TRIVIAL CASES)  
 BEARINGS ARE RELATED TO WGS 84 WITH GPS OBSERVATIONS  
 DRAWN BY: N.J.M  
 P.C. J. FLOYD  
 COUNTY: LARAMIE

THE MONUMENT IS MARKED

Date of Field Work: 04/19/2009 Office Reference: \_\_\_\_\_

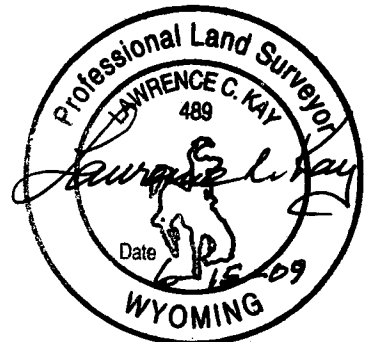
**CROSS INDEX DIAGRAM**

1 2 3 4 5 6 7 8 9 10 11 12 13 14 15 16 17 18 19 20 21 22 23 24 25																										
A																										A
B																										B
C	6		5		4		3		2		1															C
D																										D
E																										E
F																										F
G		7		8		9		10		11		12														G
H																										H
J																										J
K																										K
L		18		17		16		15		14		13														L
M																										M
N																										N
O																										O
P		19		20		21		22		23		24														P
Q																										Q
R																										R
S																										S
T		30		29		28		27		26		25														T
U																										U
V																										V
W																										W
X		31		32		33		34		35		36														X
Y																										Y
Z	1	2	3	4	5	6	7	8	9	10	11	12	13	14	15	16	17	18	19	20	21	22	23	24	25	Z

Firm/Agency, Address  
UELS, LLC  
85 South 200 East  
Vernal, Utah 84078  
 Telephone Number: 435-789-1017

This corner record was prepared by me or under my direction and supervision.

SEAL & SIGNATURE



RECORDED 6/22/2009 AT 12:06 PM REC# 525087 JK# 2118 PG# 885  
 DEBRA K. LATHROP, CLERK OF LARAMIE COUNTY, WY PAGE 1 OF 1

1/4 CORNER OF MAXIMUM CONTROL  
 Corner Name: WEST 1/4 CORNER OF SECTION 8 Section: 8 T 19N R 65W ; 6TH P.M. Cross Index No.: G-5  
 SBRPEPLS/PLSW: March 1994 (CLCR...SJA)